

Active	MLS # 201603300	1012 Marquez Place	Santa Fe NM 87505	Listing Price: \$535,000
Status Date: 7/6/2016	County: Santa Fe	Unit # 103 A/104 A		Original Price: \$535,000
Seller's Representative: Roseanna Z Gonzales		Adobe Realty of SF, Inc.		



Class RESIDENTIAL
Area 3N-SF City SE North
Bedrooms 1
Baths (FTH) 2(0 1 1)
Year Built Display 2003
Tax Parcel 910005462
DOM 12
Association Fees Inc. Community Area Maint, Exterior

Property Subtype Condo
Total Sq Ft 0
Price/TotSF
Horses Allowed
Lot Size Sq Ft 0
Lot Size Acres
Subdivision

Property Description South Capitol, centrally located near Trader Joes, Maria's, Dulce, Whole Foods, Backstreet bistro, banks and other urban amenities, The Lofts @ Marquez Place offers live-work, multi use & C-2 zoning. Subject property consists of two back to back contemporary ground level units with 4 entrances, recently renovated into Salon. Two ADA compliant bathrooms, kitchenette, high ceilings, AC, in-floor radiant heat and stained concrete floors. Unique opportunity for a business user or investor with a built in tenant. The space is presently configured as a sophisticated salon; tenant in place to March 2017 HOA fees approx \$350/mo. to include exterior building maintenance, roof and stucco, landscaping, snow removal, cistern, Insurance, CAM. Wood Gormley school district.

Directions To Property St. Francis, East at Cordova, North on Marquez just past Maria's, North at Wells Fargo bank [past SF Party rental and tire place] The Lofts directly in front. Turn right, immediate left into 1012 Marquez Place Lofts parking area, 1st bldg on the left.

Selling Price: SP%LP:	Selling Date:	Pending Date:
Contract Date	Off Street Parking Spaces	
Fractional Ownership No	Garage Spaces 0	
Levels Single	Interior Steps No	
Fireplaces No	Number of Fireplaces	
Guest House No	Approx. Age 11 - 20 Years	
Apx Heatd SqFt-Tot Liv A 1,251 - 1,500	Builder	
Lot Dimensions	Listing Broker Is Transaction Broker	
Owner NMREL Yes	Lead Based Paint Discl. No	
Map Book	Map	
Zoning	Horse Facility	
Main House Sq Ft	Studio Sq Ft	
Guesthouse Sq Ft	Other Heated Space Sq Ft	
ADA Compliant Yes	Elementary Wood Gormley	
High School Santa Fe	Junior High Capshaw	
Transfer Fees \$	Taxes \$	
Tax Year	Estimated Future Tax	
Assessments, HOA/COA/Oth HOA \$350/month. Exterior, roof, & stucco maintenance, grounds landscaping, snow removal, insurance		

Presented By: Beth Faure	Adobe Realty of SF, Inc.
Phone CELL: 505-690-2713ext. 0	312 Camino Alire
E-mail: beth4a@yahoo.com	Santa Fe NM 87501
Web Page: http://www.adoberealtyofsantafe.com	Ofc: 505-988-2806
07/18/2016	

Seller's Representative: Roseanna Z Gonzales Adobe Realty of SF, Inc.

ROOM DIMENSIONS

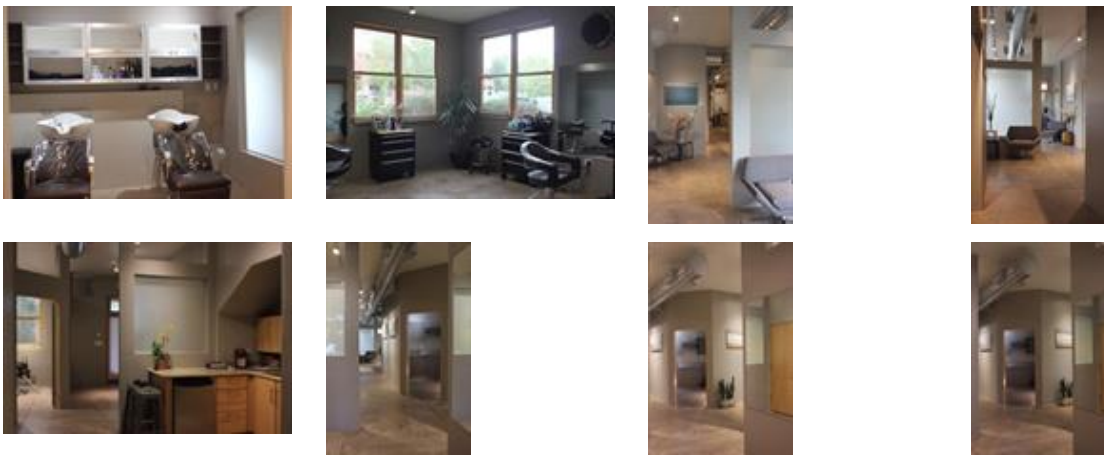
Master Bedroom	Formal Dining	Utility
2nd Bedroom	Living/Dining	Media
3rd Bedroom	Breakfast Room	Entry
4th Bedroom	Living Room	Office
Kitchen	Family Room	Studio
Kitchen/Nook	Loft	Garage
Kitchen/Dining	Den	Other Room

Garage Type	None	Water	City
Style	Contemporary	Water Rights	No
Roof	Other - See Remarks	Showing Instructions	24 Hour Notice, Agent Present
Construction	Frame, Stucco	Documents on File	Binder
Floor	Concrete	Authority	Santa Fe City
Substructure	Slab	Possession	Negotiable, Sub to Tenant Rights, Upon Funding
Heating	Radiant	Extras	Insulated Windows, Landscaped
Heat Distribution	Radiant	Association Fees Inc.	Community Area Maint, Exterior Bldg Maint, Insurance, Roof Maintenance
Cooling	Evaporative - Window		
Gas	Natural		
Electric	Public		
Sewage	City		

GREEN FEATURES

City of SF - Level
 BGNM-ANSI Standard Level
 HERS Rating Level
 LEED Level
 Green Remarks

Additional Photos



Presented By: Beth Faure	Adobe Realty of SF, Inc.
Phone: CELL: 505-690-2713ext. 0	312 Camino Alire
E-mail: beth4a@yahoo.com	Santa Fe NM 87501
Web Page: http://www.adoberealtyofsantafe.com	Ofc: 505-988-2806

07/18/2016